

DAIWA 20 ALPHAS AIR TW DRAG CLICKER INSTALLATION



REQUIRED FOR INSTALLATION:

- 10mm WRENCH
- PRECISION PHILLIPS OR FLAT HEAD SCREWDRIVER
- 2.5mm ALLEN WRENCH
- COTTON SWAB
- SUPER GLUE
- DRAG WASHER GREASE



Using the phillips or flat head screwdriver, remove the handle locking plate.



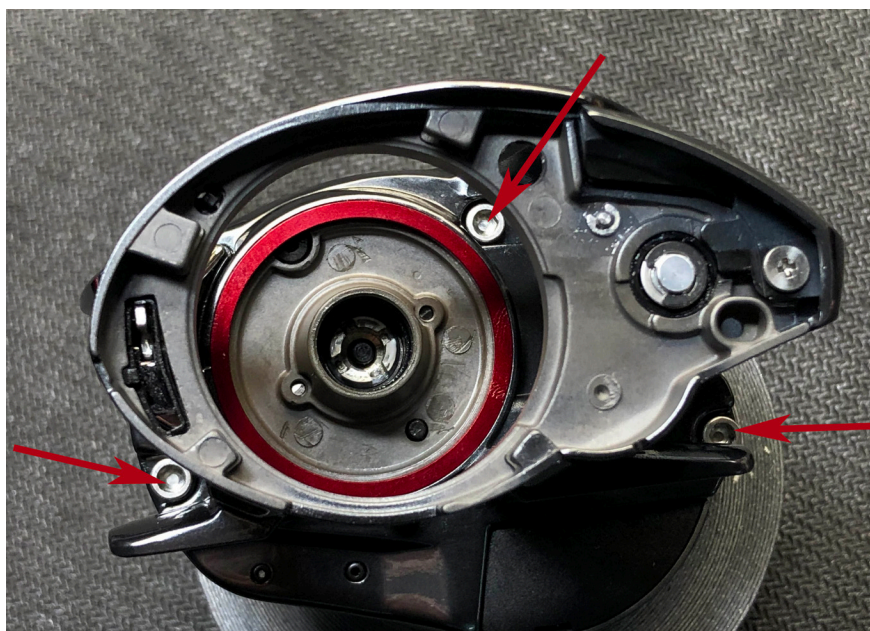
Remove the 10mm handle lock nut.



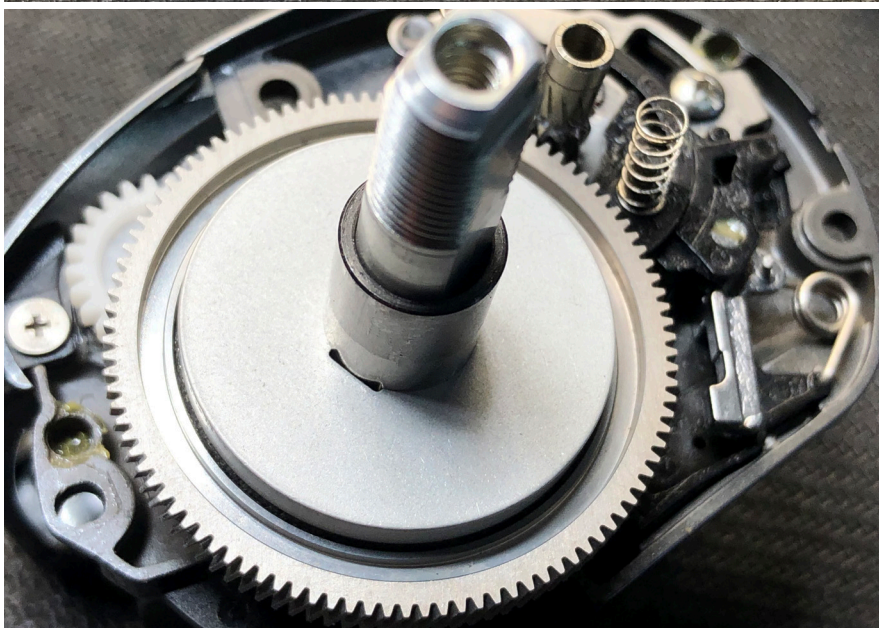
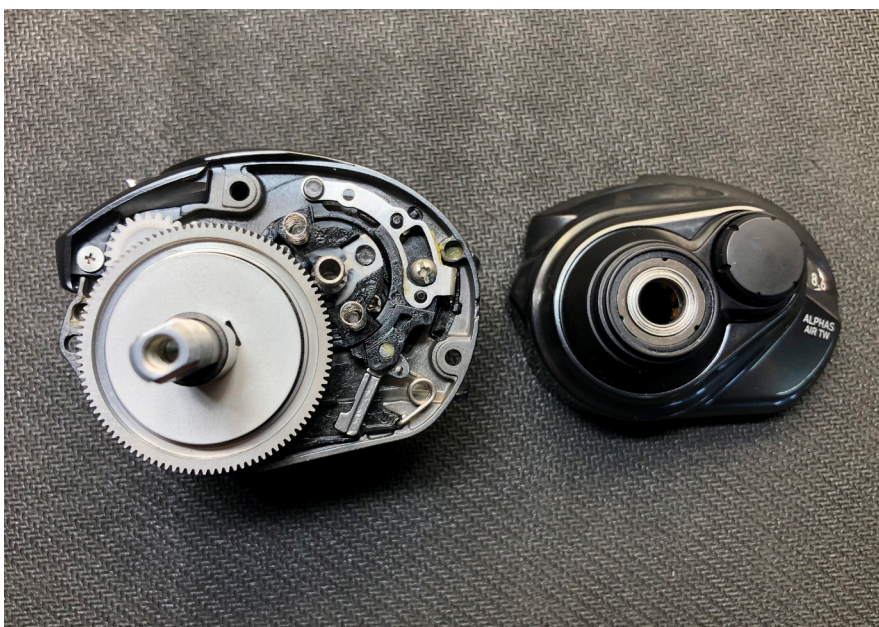
Tip: Layout parts in order removed. Taking photos during installation is helpful for assembly.



Unlock, remove sideplate and spool.



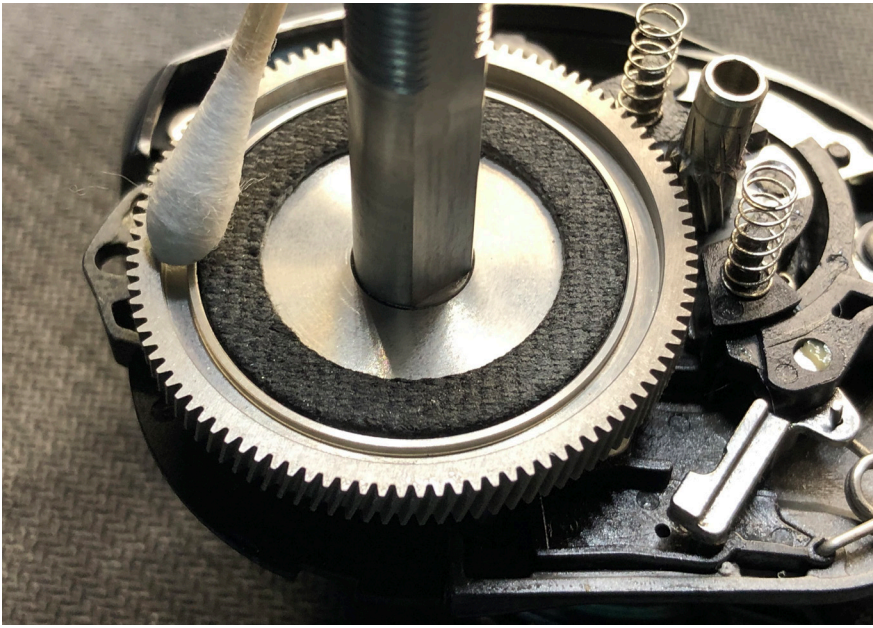
Remove 3 screws using 2.5mm allen wrench.



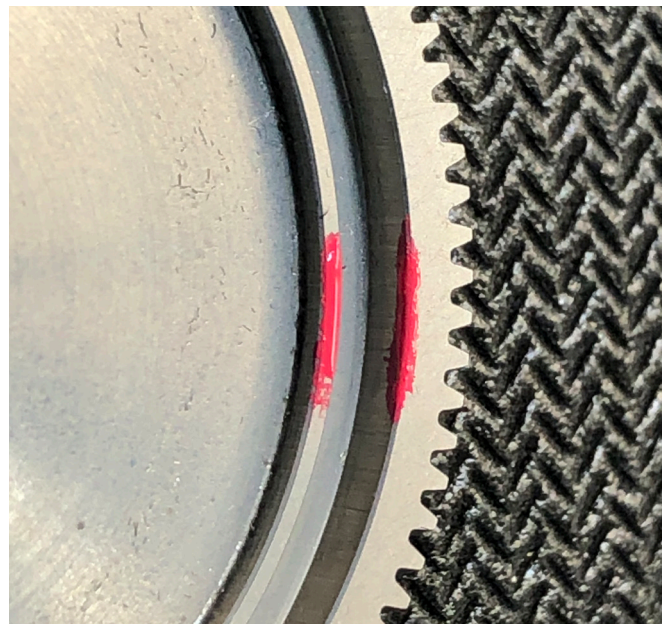
Remove gear cover.



Part will be replaced with drag disk washer provided in kit.



Apply degreaser to cotton swab and clean inside edge/inner ring of main gear where the “clicker ring” will sit. A tiny bit of super glue is needed to hold clicker securely in place. Clicker ring is precisely machined to have a perfect fit. *Note: DO NOT test fit clicker ring! Can be hard to remove without damaging ring without proper tools.



Only a very small amount of super glue is needed. Apply super glue to the areas in red.



Press in ring. Make sure ring is sitting flush. Allow super glue to dry.



Install gear assembly into reel. Using the same grease you use on drag washer, apply a light layer on the inside of “Metal” clicker ring. *NOTE* PLASTIC CLICKER RING CAN BE RUN DRY FOR MAXIMUM AUDIBLE CLICKING SOUND.

